

# Quick Start

Follow these steps to quickly and easily setup your XLNT Idea Nexis Pro 100

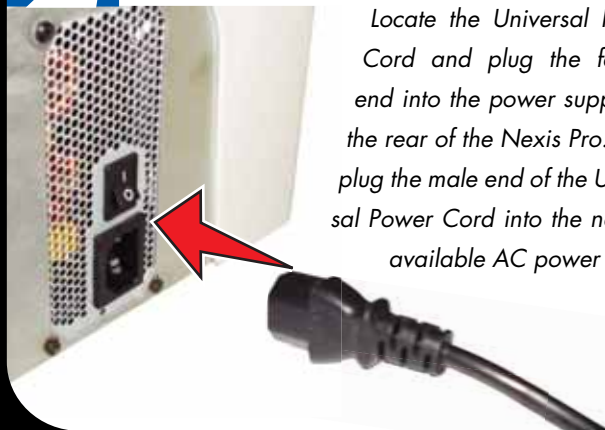
## 1 Remove Insert

Before power is connected to the Nexis Pro lift the front cover and remove the cardboard packing material as shown.

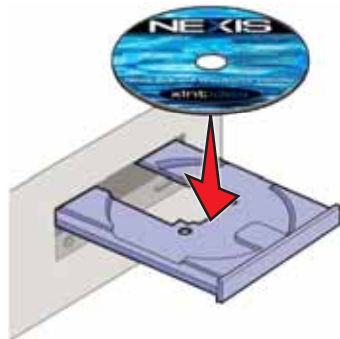


## 2 Plug In Power

Locate the Universal Power Cord and plug the female end into the power supply on the rear of the Nexis Pro. Then plug the male end of the Universal Power Cord into the nearest available AC power outlet.



## 3 Insert Software DVD

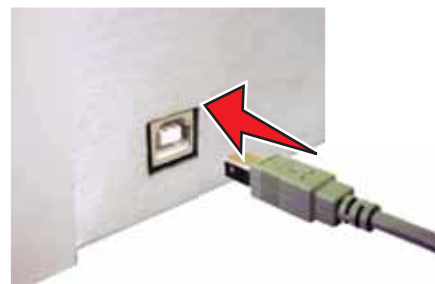


A. Place the XLNT Idea Nexis Pro Setup DVD into your computer's DVD drive. This step will install the drivers for your Nexis Pro. If autorun is enabled on your computer the following screen will appear. Close all open programs and click the "Install" button to begin installation.



B. During the driver software installation a window will appear prompting you to connect a USB 2.0 cable between your computer and the USB port on the rear of your Nexis Pro. Do this as shown (upper right picture in this box) and click the "Continue" button on the onscreen window.

C. By connecting the USB 2.0 cable between your computer and the Nexis Pro your operating system will automatically detect the Nexis Pro. One or more windows may appear regarding compatibility with your version of Microsoft Windows, click "Continue Anyway" whenever these windows appear to continue installation.

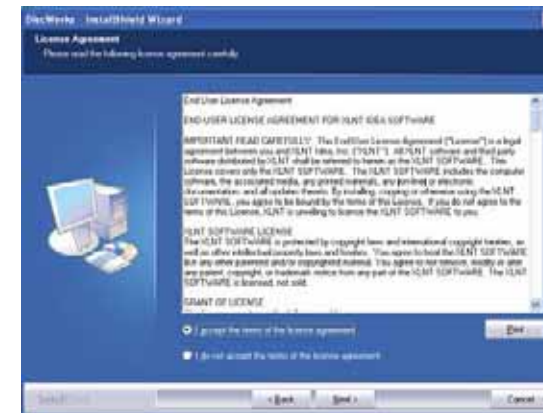


D. When you reach the screen below, your Nexis Pro drivers will be fully installed. Click the "Next" button to continue to the installation of the DiscWorks software shown in Step 4.

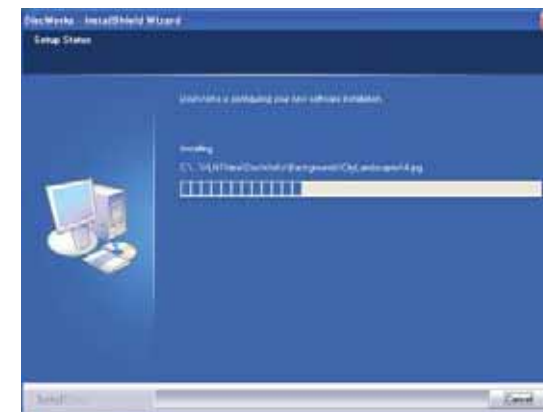


## 4 Install DiscWorks

A. Select the "I accept the terms of the license agreement" radio button from the screen below and click the "Next" button.



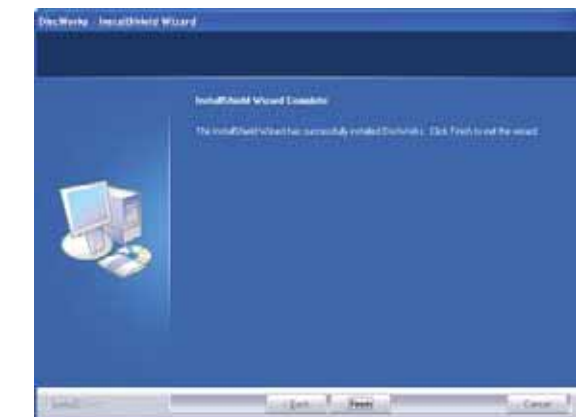
B. The XLNT Idea DiscWorks software program will begin installing and you will see the progress in the following window.



C. Select the setup type "Complete" and click the "Next" button in the window that appears.



D. When you see the following window click "Finish", the XLNT Idea DiscWorks software is now completely installed. Please eject the XLNT Idea Nexis Pro Setup DVD and store it in a safe place for future use.



## 5 Install Disc Baskets

Open the Nexis Pro front lid and install both Disc Baskets as shown below.



Note that the rounded rectangles in the center of the Disc Baskets must be placed correctly to correspond with the rounded rectangles on the base of the Nexis Pro.

**TURN OVER TO CONTINUE**  
**NEXIS**  
 MEDIA PUBLISHING SYSTEM

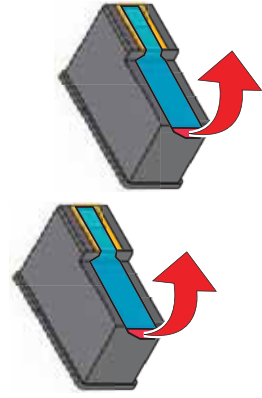
# 6

## Install and Align Ink

Close all XLNT Idea software if open also make sure that the Nexis Pro is powered on and the blue power button is illuminated. Raise the front lid and press the blinking red control button as shown. This will move the ink cartridge holders into their exchange position within the Nexis Pro.



Remove the ink cartridges from their packaging. Also remove the tape covering the print heads of each ink cartridge you are installing as shown, taking care not to touch the print heads on the bottom or the gold electrical contacts on the rear of the cartridges.



Press down on the tabs on the front of each ink holder. The covers will spring upward to open. Place the ink cartridges into their respective holders taking note to use the correct color-coded holder. Close the covers until they latch into the lower holders as before. Close the Nexis Pro lid to return the ink cartridges to the parked position.



Whenever a new cartridge is installed in the Nexis Pro you must perform a cartridge alignment to properly align the cartridge to the printed image.

Click on **Start > Programs > XLNTIdea > Nexis 100Pro > DiscDirect**

This will launch the XLNT Idea DiscDirect software . From the DiscDirect Main window go to the **"Tools"** menu and select **"Unit Properties"**.

The window (shown right) will appear click the **"Align Cartridges"** button to go to the next window. Leave that window open onscreen and continue below.



The window on the right will appear and the Nexis Pro will pick a blank disc from the left basket, place it into the print tray and begin printing.



When the Nexis Pro has finished printing it will pick the disc from the Print Tray and place it into the right output basket. When all the alignment discs have been printed and the Disc Transport Robot has stopped moving open the front lid of the Nexis Pro and remove the printed discs. The discs will look similar like the disc pictured on the left.

Examine the printed discs, you will notice that one arrow within each lettered group will stand out from the background lines more than those around to it. Enter the number of that box into the onscreen window for each letter group. When you have finished entering all of the values of every group on the discs and are satisfied with your choices click the **"Ok"** button to close the window.



# 7

## Disc Image Alignment

Click on **Start > Programs > XLNTIdea > Nexis 100Pro > DiscDirect**

This will launch the DiscDirect software (DiscDirect main window shown on right). DiscDirect must be aligned to your Nexis Pro before you can print onto the rounded disc surfaces accurately.



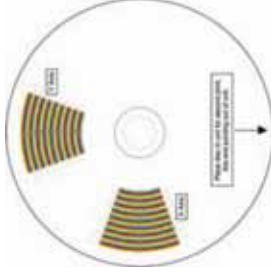
From the **"Tools"** menu select **"Unit Properties"** and from the window that opens click the **Disc image Alignment** button to open to the window below.



This window provides adjustment for the printed image and allows you to adjust and set the print alignment.

Open the front lid of the Nexis Pro and place one **(1)** blank printable disc into the left input basket and close the front lid of the Nexis Pro.

Click the **"Print Alignment Image"** button in the corner of the open window and the Nexis Pro will pick a disc from the Input Basket and begin to print.



When the disc has finished printing and placed the disc in the Output Disc Basket raise the Nexis Pro lid and remove the printed disc.

The printed disc will look like the image (shown at right).



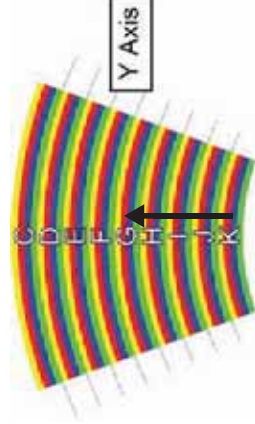
Place this disc back into the Input Disc Basket with the arrow on the printed disc pointing directly towards the front of the Nexis Pro as shown at left.

Close the Nexis Pro lid and click the **"OK"** button in the onscreen window.

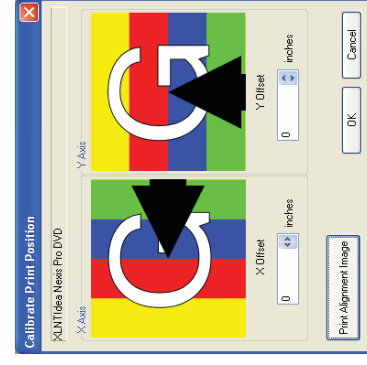
This will print a second image of two black alignment arrows on the already printed disc. When the Nexis Pro has finished and the disc transport robot has stopped open the front cover and remove the printed disc. Examine the printed CD noting the areas marked **X Axis** and **Y Axis**.



Note that (in the X Axis example shown at right) the tip of the arrow points to the left edge of the Yellow line in section H.



While (in the Y Axis example shown at left) the tip of the arrow points to the lower edge of the Red line in section G.



Now refer to the onscreen window and use those values found on the printed disc and adjust the X Axis alignment, use the Right and Left arrows to scroll through the letters and colors to match as closely as possible those on the printed disc.

Also adjust the Y Axis alignment, using the Up and Down arrows to scroll through the letters and colors to match as closely as possible those on the printed disc.

Once you have entered the correct values into the boxes and are satisfied with your choices click the **"Ok"** button to close the window and save your settings. You are now finished with the XLNT Idea Nexis Pro Setup we hope you enjoy your XLNT Idea purchase for many years to come.

You have now completed the Ink Alignment proceed to Step 7.