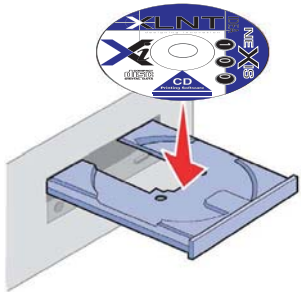


NEXIS 100AP Start Here

1 Insert Software CD

Place the Nexis Setup CD into the CD-ROM or DVD drive of your computer before connecting the Nexis 100AP.

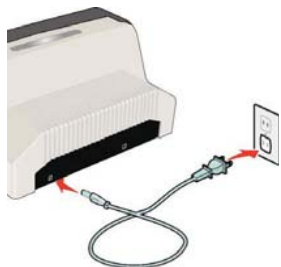


2 Plug In

Unpack the AC adapter and plug the Nexis in. **DO NOT PRESS THE POWER BUTTON** at this time.

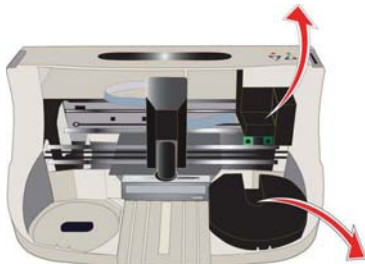


Do NOT press the power button until step 3 has been completed!



3 Remove Foam

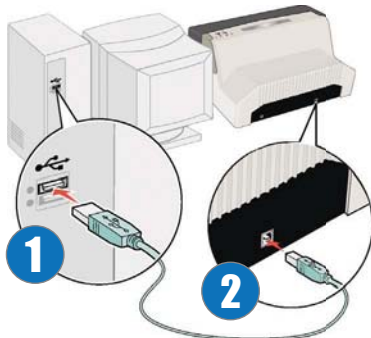
After power is applied the disc transport robot will move from the park position. Remove the foam as shown. If the robot has not moved ensure the power adapter is plugged in.



Note: Be sure to save these foam inserts as they must be used if the Nexis ever has to be shipped.

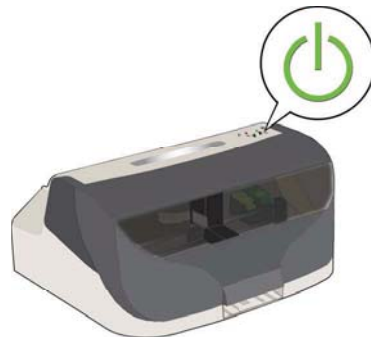
4 Connecting The Nexis

With your computer turned on plug the flat end of the USB cable (1) into an available 2.0 USB connection on your computer, plug the square end of the cable (2) into the USB port on Nexis.



5 Power On

Once you have removed the packing foam and connected the Nexis to your computer briefly press the power button. The green led will illuminate.



6 Installing DiscWorks

The Nexis software CD-ROM will auto run. Once you have completed the previous steps click "Next" on the installer screen.



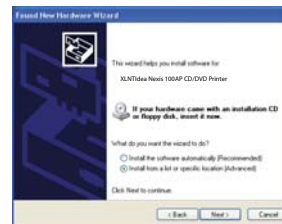
Once the Disc Works installation has completed the Nexis printer driver will need to be installed.

7 Print Driver

Windows will automatically detect the Nexis 100AP and display the following screen. Select the option "No, not at this time". Then click "Next".



Select "Install from a list or specific Location (Advanced)". Then click "Next".



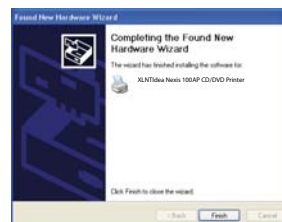
Then select "Search removable media (floppy, CD-ROM...)" Make sure it is the only item checked as shown below. Then click "Next".



Once your computer locates and begins copying the drivers from the CD-ROM the below message will appear. Click "Continue Anyway".



After the Nexis driver installation is completed, click "Finish". You must align the new inkjet cartridges for best print quality.



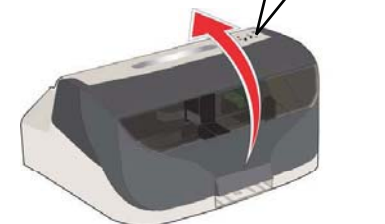
8 Disc Baskets

Install the disc baskets as shown. Incorrect alignment may result in damage to the printer.

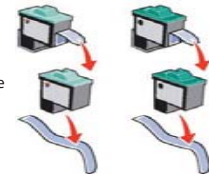


9 Install Ink

While powered on raise the lid of the printer and press the ink button as shown. The ink heads will move to the center of the Nexis.



1. Remove the ink cartridges from their packaging.



2. Remove the tape covering the print heads, taking care not to touch the heads or the gold contacts on the back.

3. Place your fingers behind the guide bars and press the tabs of the cartridge holders inward.

4. While pressing the tabs lift the covers upward to open.

5. Place the ink cartridges into their holders taking note to use the correct color coded holder.

6. Close the ink covers until they latch onto the lower holders as before.

7. Close the lid of the Nexis.

Please note you should never have to force the ink cartridges into their holders, if excessive force is necessary remove and reinsert the cartridges or check for any obstructions within the holders.

xInt idea

NEXIS 100AP Alignments

10 DiscWorks

You will first need to align the ink cartridges for maximum print performance.

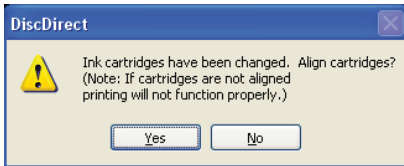
To launch Disc Direct click on your Start Menu -> Programs -> Disc Works -> Disc Direct.



Ink cartridge alignment is critical for good print quality!

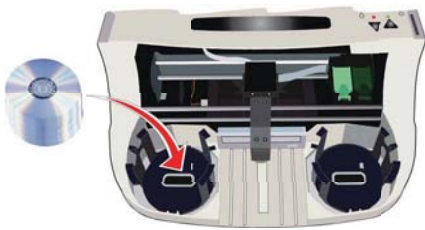
11 Ink Alignment

Once DiscWorks is started it will detect that a new set of ink cartridges have been installed and will ask to perform an alignment print, click "Yes".



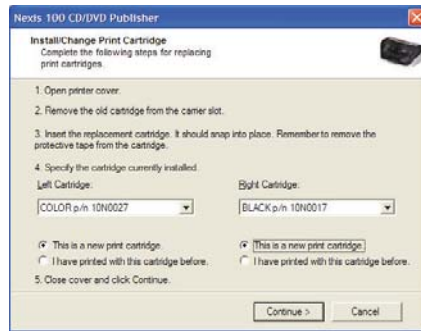
12 Printable Disc

Place two blank printable CD/DVD media in the left disc basket as shown. The blank disc will be used to print the cartridge alignment arrows.

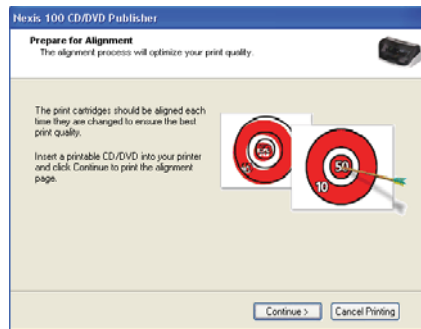


13 Cartridge Setup

Select the type of cartridge installed From the pull-down menus. The Nexis comes with **10N0027** and **10N0017**. Then select "Continue".



Make sure there is a blank printable CD/DVD in the left disc basket of the Nexis then click "Cartridge Alignment Test".



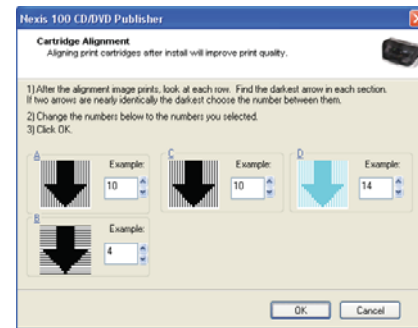
14 Best Arrows

Remove the finished disc. Pick the best arrows shown from each row A,C,D,B. You can choose number values in between two arrows shown if neither arrow seems perfect. Selecting the best arrow is critical for optimal print quality.



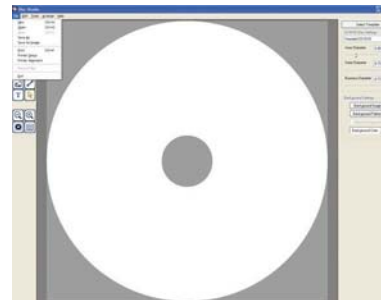
15 Alignment Numbers

Pick the best arrow of each row A,C,D,B from the disc. Enter its corresponding number in the Cartridge Alignment dialog. Then click "OK".

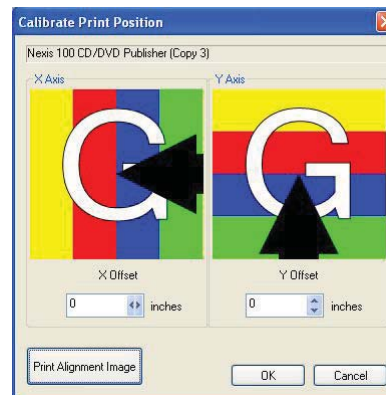


16 Print Alignment

Open Disc Studio. Click on "File", then "Printer Alignment". Make sure you have a blank printable disc loaded into the far left disc basket.

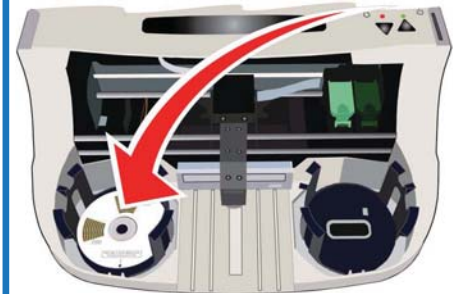


With a blank printable disc loaded into the left disc basket click "Print Alignment Image". But leave the Calibrate Print Position window open.

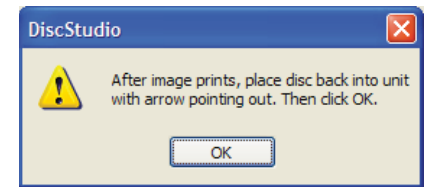


17 Final Print

The Nexis disc transport robot will move the disc to the output basket when the print is complete. Remove the disc from the basket and place it back into the input basket with the arrow pointing forward as shown.

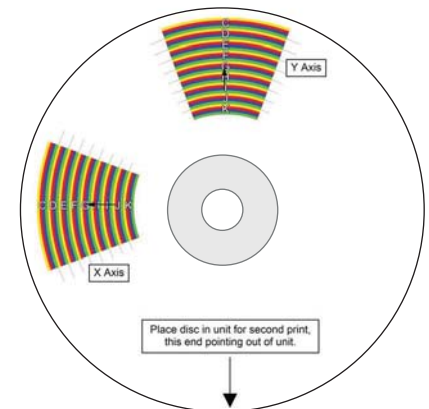


Once the disc is placed back into the input basket click "OK".



1. Once the disc has finished printing remove it from the disc output basket. Look at the color arcs marked X Axis. Find the nearest letter the arrow is pointing to. Select that letter from the X Axis drop down menu in the Calibration Print Position window.

2. With the slider bar, line up the arrow to the color that matches what's on the printed disc. Repeat these steps for the Y Axis.



Congratulations you have successfully set up your Nexis 100 for optimal printing.